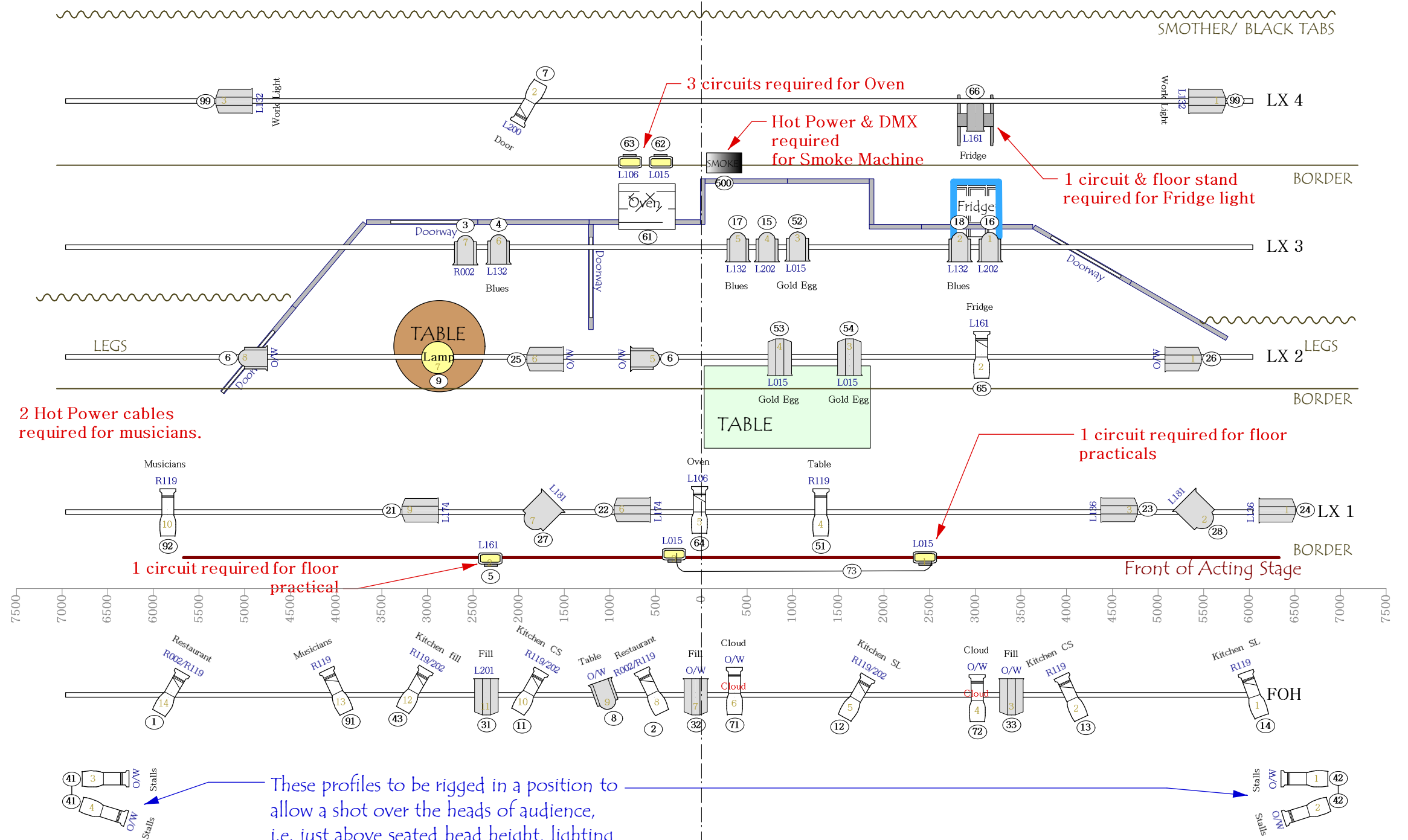


Instruments		Num In Inventory	Used	Remaining
	Practical Flood	5	5	0
	Selecon Pacific Zoom 23-50°	0	8	-8
	Oven Eyes	1	1	0
	Selecon Acclaim Plano Convex	0	1	-1
	Selecon Zoom 12-28°	0	11	-11
	1200 Range Fresnel	0	10	-10
	7" Plano Convex	0	13	-13
	Hanging lamp	1	1	0
	Arena High Performance Fresnel 245mm	0	2	-2
	Smoke machine	0	1	-1

Legend	
	Purpose
	Colour
	Gobo 1
	Unit Number
	Channel



**NOTES:**

- All Fresnels and PC's to be rigged with barn doors.
- Hanging lamp and practical floods are all toured by the Company
- 6 x Practical circuits are required as indicated in red.
- 1 Ballast light is required to patch together with the toaster SR.
- 1 Hot Power circuit & DMX is required for the smoke machine UC.
- 2 Hot Power circuits linked to sound power are required for musicians DSR.
- Houselights to be patched to Channel 100 where possible.
- Venue to supply gel, 2 x gobo holders (A size).
- Ideal Trim for LX bars is 6.5m.

HANGING PLOT FROM STAGE FRONT (mm)  
 500 Front edge of Magic Chicken Floor  
 600 Pelmet Border  
 1000 LX 1  
 2350 Border  
 2700 LX 2  
 3000 Legs  
 3900 LX 3  
 4800 Border  
 5500 LX 4  
 6500 Smother/Tabs

A show by Theatre Beating.  
 Layout drawn by Nik Janiurek.  
 Flattage is all pin hinged together with french braces at the back for additional support.  
 All masking to be supplied by the venue.

SHOW:	THE MAGIC CHICKEN
VENUE:	Australian Tour 2014
DIRECTOR:	Geoff Pinfield
DESIGNER:	Brad Knewstubb
LD:	Nik Janiurek
	Tel: +64 21 166 4437, janiurek@ihug.co.nz
Date drawn:	12/7/2014 Version 1
Scale:	1 : 50 at A3 size