

4 rams service lines 24 to 31.
- 4 lines in this group can fly, and the 4 remaining bars can be dead-hung.
- Maximum spread weight 250kg per bar.

Smother	L31
Projector	L30
LX 6	L29
LX 5	L28
Smother of legs	L27
LX 4	L26
LX 3	L25
LX 2	L24

4 rams service lines 17 to 23.
- 4 lines in this group can fly, and the 3 remaining bars can be dead-hung.
- Maximum spread weight 250kg per bar.

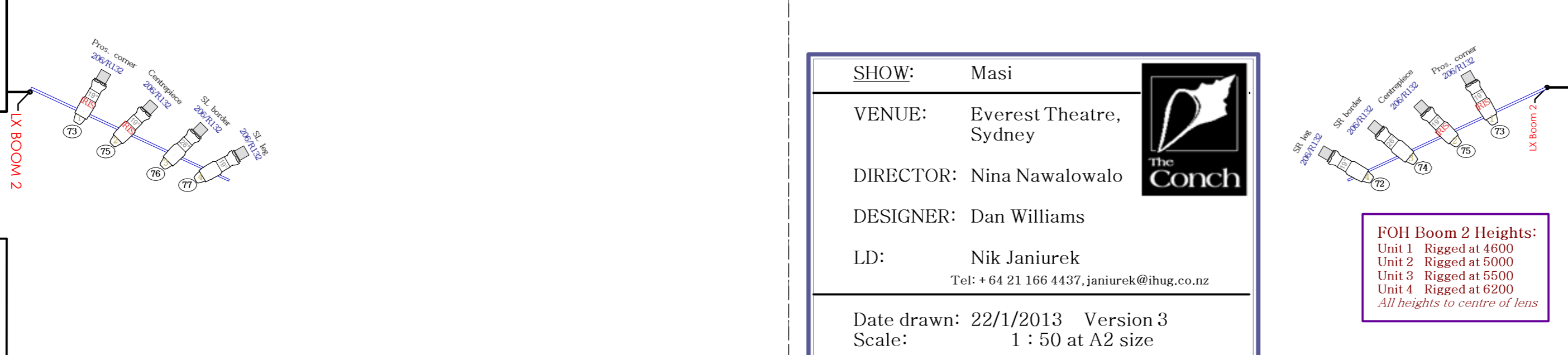
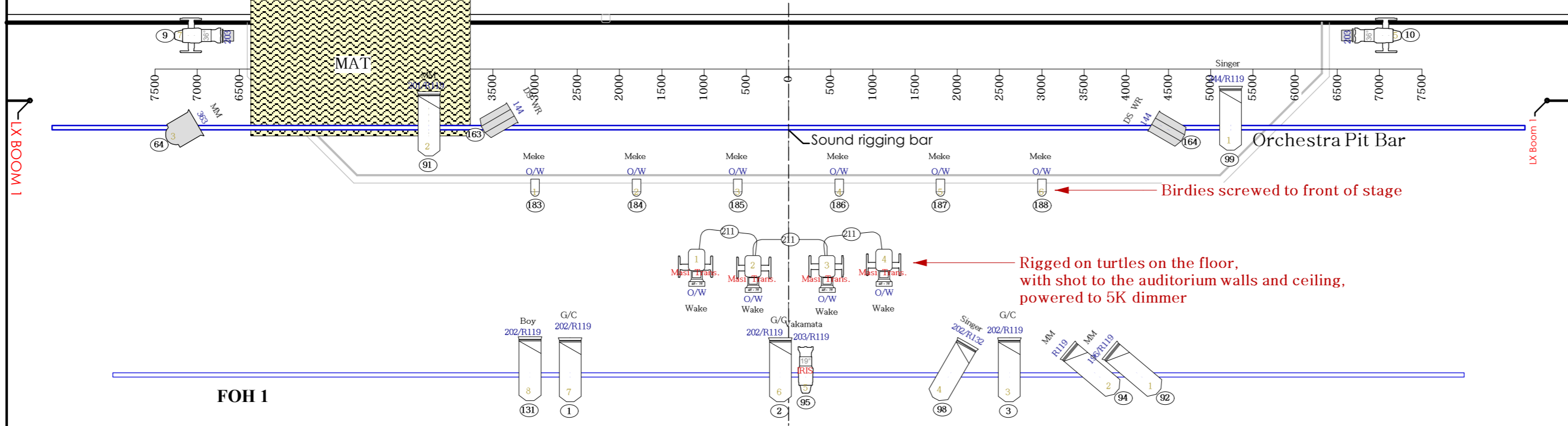
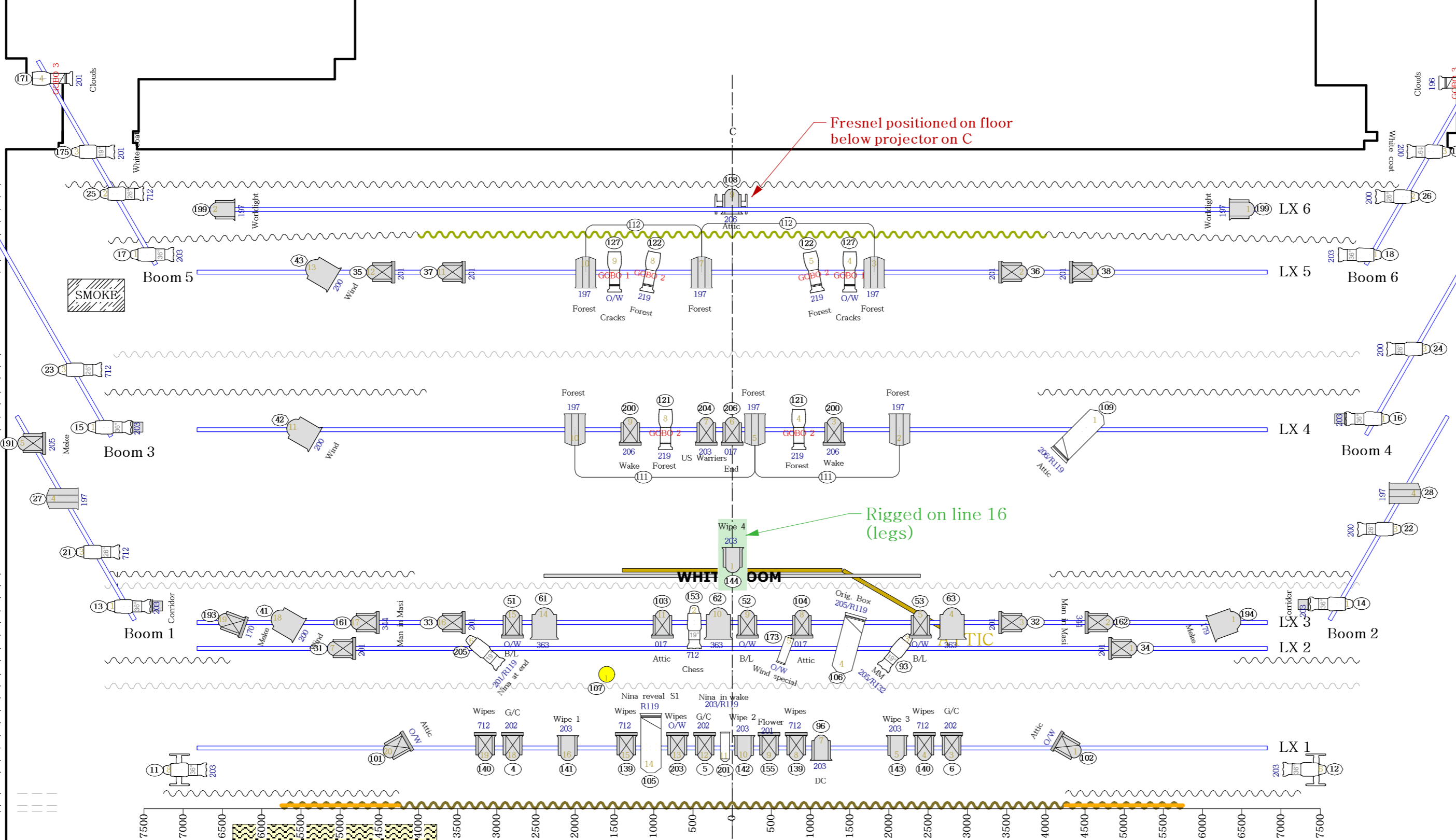
Border	L23
Legs	L22
Legs	L21
Legs	L20
Hanging mics	L19
LX 4	L18
LX 3	L17

8 rams service lines 1 to 16.
- 8 lines in this group can fly, and the 8 remaining bars can be dead-hung.
- Maximum spread weight 250kg per bar.

Legs	L16
Border	L15
LX 3	L14
LX 2	L13
Legs	L12
Lampshade	L11
Border	L10
Hanging mics	L9
Border	L8
LX 4	L7
LX 3	L6
LX 2	L5
LX 1	L4
LX 1	L3
LX 1	L2
LX 1	L1

Shared ram for Legs and House Curtain

House Curtain	L1
Legs	L2
Border (winched)	L3
Border (winched)	L4
Border (winched)	L5
Border (winched)	L6
Border (winched)	L7
Border (winched)	L8
Border (winched)	L9
Border (winched)	L10
Border (winched)	L11
Border (winched)	L12
Border (winched)	L13
Border (winched)	L14
Border (winched)	L15
Border (winched)	L16



Boom Heights:
Unit 1 As low as possible
Unit 2 Rigged at 800
Unit 3 Rigged at 1200
Unit 4 Rigged at 2200
Unit 5 Rigged at 3000
All heights to centre of lens

Instruments	Num In Inventory	Used	Remaining
Lampshade	0	1	-1
Birdie	0	6	-6
1200 Range Fresnel	16	10	6
Selecon Pacific 45°-75°	0	4	-4
Source 4 36deg	0	10	-10
Jem smoke machine	0	1	-1
Selecon Pacific Zoom 23-50°	0	9	-9
1200 Zoomspot 18°-32°	20	12	8
1.2K Rama Fresnel	35	35	0
Arena High Performance Fresnel 245nm	0	8	-8
Source 4 26deg	8	8	0
7° Plano Convex	0	8	-8
Source 4 19deg	12	12	0
Selecon Zoom 12-28°	0	4	-4

Legend

Purpose	Colour
Channel	Number
Dimmer	Channel

NOTES:

- All Fresnels and PC's to be rigged with barndoors.
- All gel is Lee except frost which is Rosco Supergel.
- Floor 45-75 pacifics have transparencies in them and are positioned on the floor, DS of the apron, lighting the ceiling/walls.
- Position of LX 3 needs to be in line with booms in wing 1 and dictate the position of the corridor of light.
- Channel 50 (2 x preludes on LX 3) need to be underslung from LX 3 so that they hang 1m below the bar. This is to achieve a shot into the front rows of the auditorium.
- Channel 107 is a toured lampshade, rigged off Line 8.
- Channel 148 needs to be rigged on the centre of line 16 (legs), shooting upstage. If the length of the legs are longer than 9m, the light should be underslung to a height of 8.5m.
- Instruments rigged on 'Orchestra Pit Bar' need to have a shot straight down onto the pit, downstage of the housecurtain, if this is not possible, they should be rigged as high as possible to the nearest FOH Boom 1.
- Note that some lights (e.g on pan bars and booms) also have top hats.
- Some instruments are paired, but not ganged on the plan in the interests of readability. Please refer to Channel list sheet for pairing. *In addition, the following pairings should be patched to 5K dimmers as their current draw exceeds 2.4k at 100%:*
 - *LX 5, Channel 112 (3 x 1.2K PCs)
 - *LX 4, Channel 111 (3 x 1.2K PCs)
 - *Auditorium floor, front of stage, Channel 211
- Heights of instruments on booms are to the centre of the lens and are detailed in the box at the top right of the plan. (FOH Boom heights are at the bottom right). *Note that unit numbers on booms are particular to the detailed height and are not drawn to scale!*
- Booms are positioned close to the upstage legs creating the wing, not the DS legs as is more traditional.
- Channels 9 & 10, on turtles downstage, may need to be rigged on short booms and placed on the floor of the auditorium if the stage extension is not the same width as the stage.
- Gobo 1 refers to Reflected Water.
- Gobo 2 refers to Lithoplates with dots.
- Gobo 3 (on booms 5 & 6) refers to Clouds.
- Masi gobo (on booms 1 & 2) is an M sized lithoplate pattern.


SHOW: Masi

VENUE: Everest Theatre, Sydney

DIRECTOR: Nina Nawalowalo

DESIGNER: Dan Williams

LD: Nik Janiurek
Tel: +64 21 166 4437, janiurek@ihug.co.nz



Date drawn: 22/1/2013 Version 3
Scale: 1 : 50 at A2 size

©Nik Janiurek 2013

FOH Boom 2 Heights:
Unit 1 Rigged at 4600
Unit 2 Rigged at 5000
Unit 3 Rigged at 5500
Unit 4 Rigged at 6200
All heights to centre of lens

