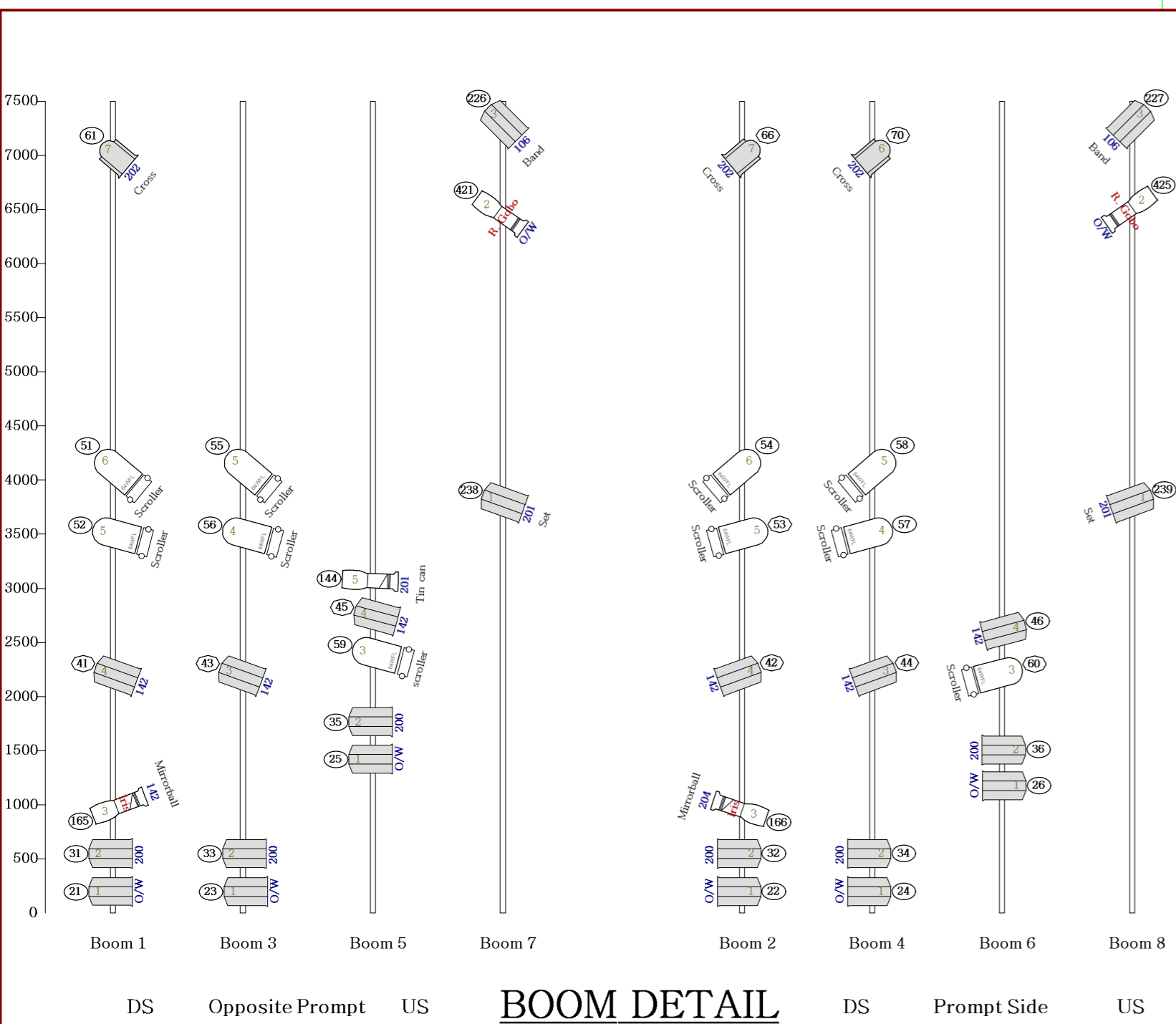
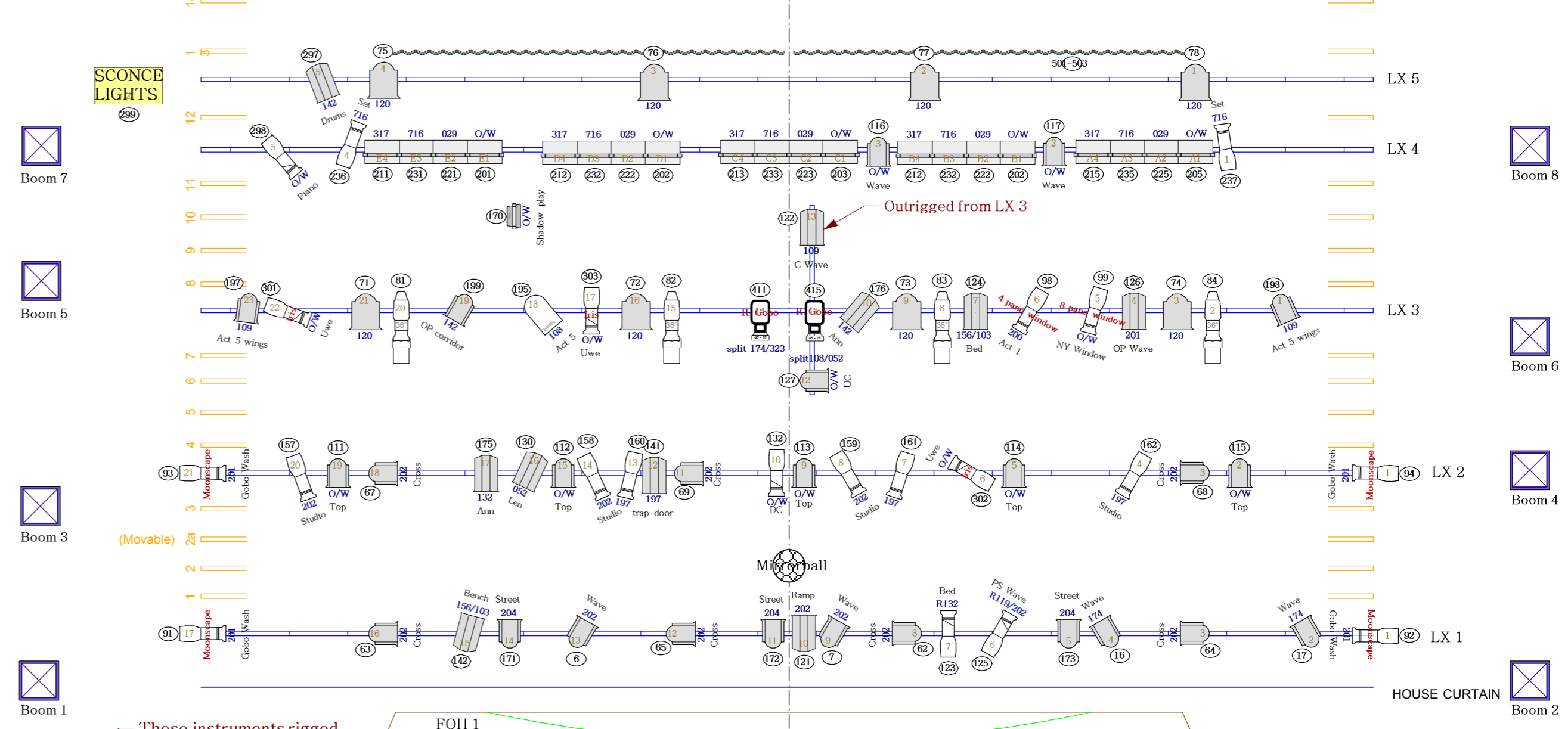


Trim Heights of LX Bars from Floor:
 LX 1,2 & 3 7000mm
 LX 4 5900mm
 LX 5 6200mm
 LX 6 5800mm



BOOM DETAIL



Instruments	Num In Inventory	Used	Remaining
PAR 64 WFL	40	15	25
7" Plano Convex	40	39	1
SeleconZoom 14-35°	36	25	11
1200 Range Fresnel	38	35	3
LED strip	0	1	-1
SeleconPacific Zoom 23-50°	18	16	2
Source 4 36deg	0	4	-4
Arena High Performance Fresnel 245mm	12	12	0
Acclaim Flood	0	1	-1
SeleconPacific Zoom 45-75°	4	2	2
Aurora Cyc	24	20	4
SCONCE LIGHTS	0	1	-1
Houselights	1	1	0
Wind Wand	0	1	-1
HAZE Hazer	1	1	0

Legend
Purpose Colour
Unit Number
Channel
Dimmer

SHOW: LEN LYE, The Opera
 VENUE: Maidment Theatre, Auckland
 DIRECTOR: Murray Edmond
 DESIGNER: John Verryt
 LD: Nik Janiurek
 Tel: +64 21 166 4437, janiurek@ihug.co.nz

Date drawn: 28/8/2012 Version 2.6
 Scale: 1 : 50 at A2 size

©Nik Janiurek 2012

NOTES:

- All Fresnels and PC's to be rigged with barn doors.
- Lighting bars trimmed as per heights at top of plan.
- All heights on booms and perches to centre of lens please.
- Booms need to be floor-to-ceiling booms please, and positioned as far offstage as possible on OP, and mirrored on PS.
- Most pars on the booms have scrollers. Scroller cable on PS must run from boom to boom above 3m high please.
- Scroller addresses are assigned as per channel numbers plus 400; i.e. channel 51 has scroller address of 451 etc.
- LX 6 is dead hung from the grid, 5800mm high, as far US as possible.
- FOH 5 and Circle Rail positions are not drawn exactly to scale in relation to their distance from the stage. Instead they have been moved forward to fit onto the plan properly.
- Instrument positions on these bars are to scale, however.
- FOH 5 lamps to be rigged off half couplers please.
- The acclaim flood, channel 168, sits on the set and requires a circuit from PS.
- LX 3 has a 2 instruments outriggered & evenly balanced on a 1m pipe.
- The 45-75 Pacifics on LX 3 and the Pacifics on the upstage booms have gobo rotators (R. Gobo) in their gate.
- Gobo Rotators are addressed to 1 DMX number higher than its corresponding instrument channel number.
- All colour is Lee filters, except for roscos frost and 52 which is R52.
- All profiles on FOH 3 to have R119 as well as their allocated colour.

