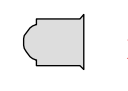

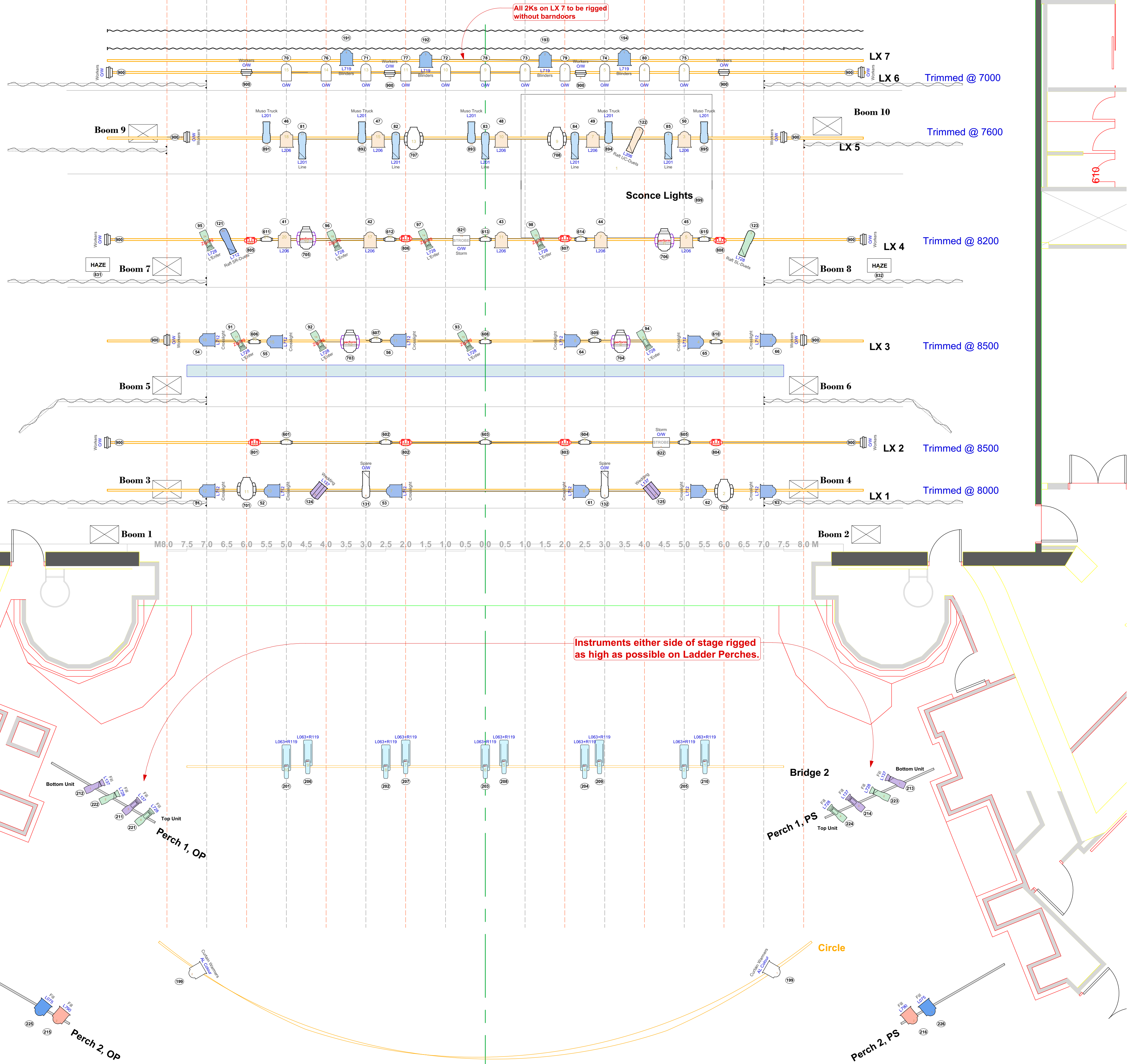


SPARE LAMPS:

-  x 2
 -  x 2
- 3 x 2Ks on circle rail from Auckland Live
4 x 12-28 Pacific & 2 x 23/50 Pacific on Perches 1 also from Auckland Live

Counterweigh
↑ zone



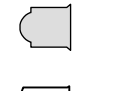
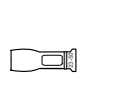
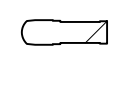
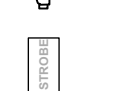
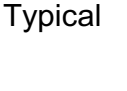
All 2Ks on LX 7 to be rigged without barndoors

Setting line

Instruments either side of stage rigged as high as possible on Ladder Perches.



LEGEND

Light	Quantity	Notes
	32 / 32	
	20 / 20	
	10 / 10	
	4 / 0	
	12 / 12	
	10 / 10	
	20 / 20	
	20 / 20	
	11 / 11	
	15 / 15	
	2 / 2	
	14 / 14	
	2 / 0	
Moving Light		
	8 / 8	
	4 / 4	
	4 / 4	
Typical		
		

NOTES

- * 8 x Gobo A sized G507 Zigzag Motion (channels 91-98) provided, which require Pacific Gobo Holders.
- * 20m AC cable required in OP wings with 4 x 5m break out cables to power 4 x fans (toured) during 'Argos'.
- * All 2Ks on LX 7 to be rigged without barn doors!
- * All 500w floods can be paired in groups, as they are all patched to 1 channel (900). 5 dimmers have been allocated for these.
- * Spare instruments are listed on OP side. 2 x 2K fresnels on circle and 3 Pacifics on Perch 1 each side are provided by Auckland Live.
- * All Perch lights rigged as high as possible.
- * Dimmer required US PS for scone lights on Musician's truck.
- * Total dimmers 132
- * Flown Boom 10 requires batten height of 7.2m approx.
- * All show lighting practicals are toured.

A NEW ZEALAND DANCE COMPANY PRODUCTION

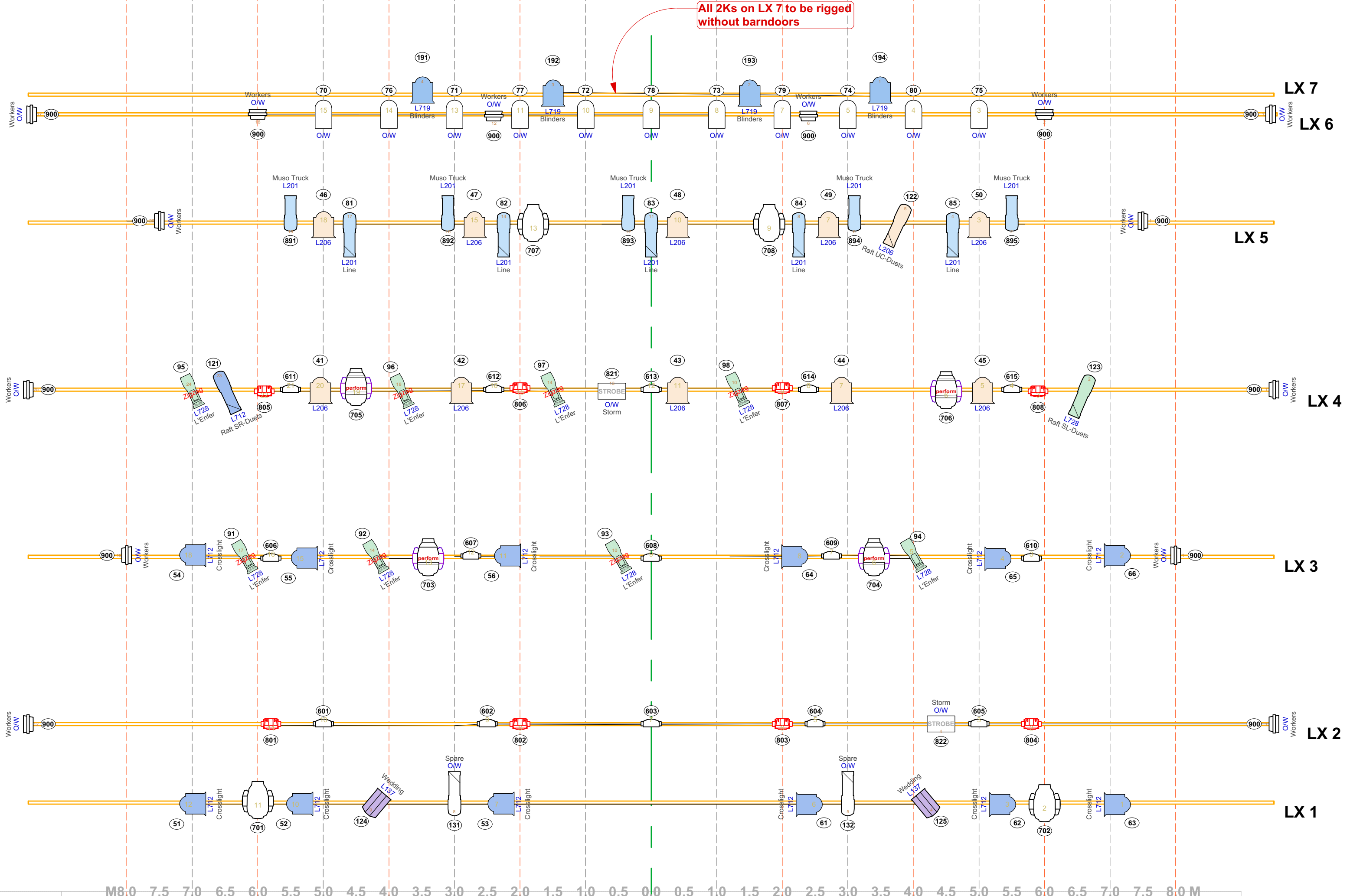
Show:	Orpheus - A Dance Opera
Venue:	Civic Theatre Auckland
Choreographer:	Michael Parmenter
Lighting Designer:	Nik Janiurek
Set Designer:	John Verryt
Sound Designer:	David Downes
Costume designer:	Tracey Grant Lord
AV Designer:	David Downes

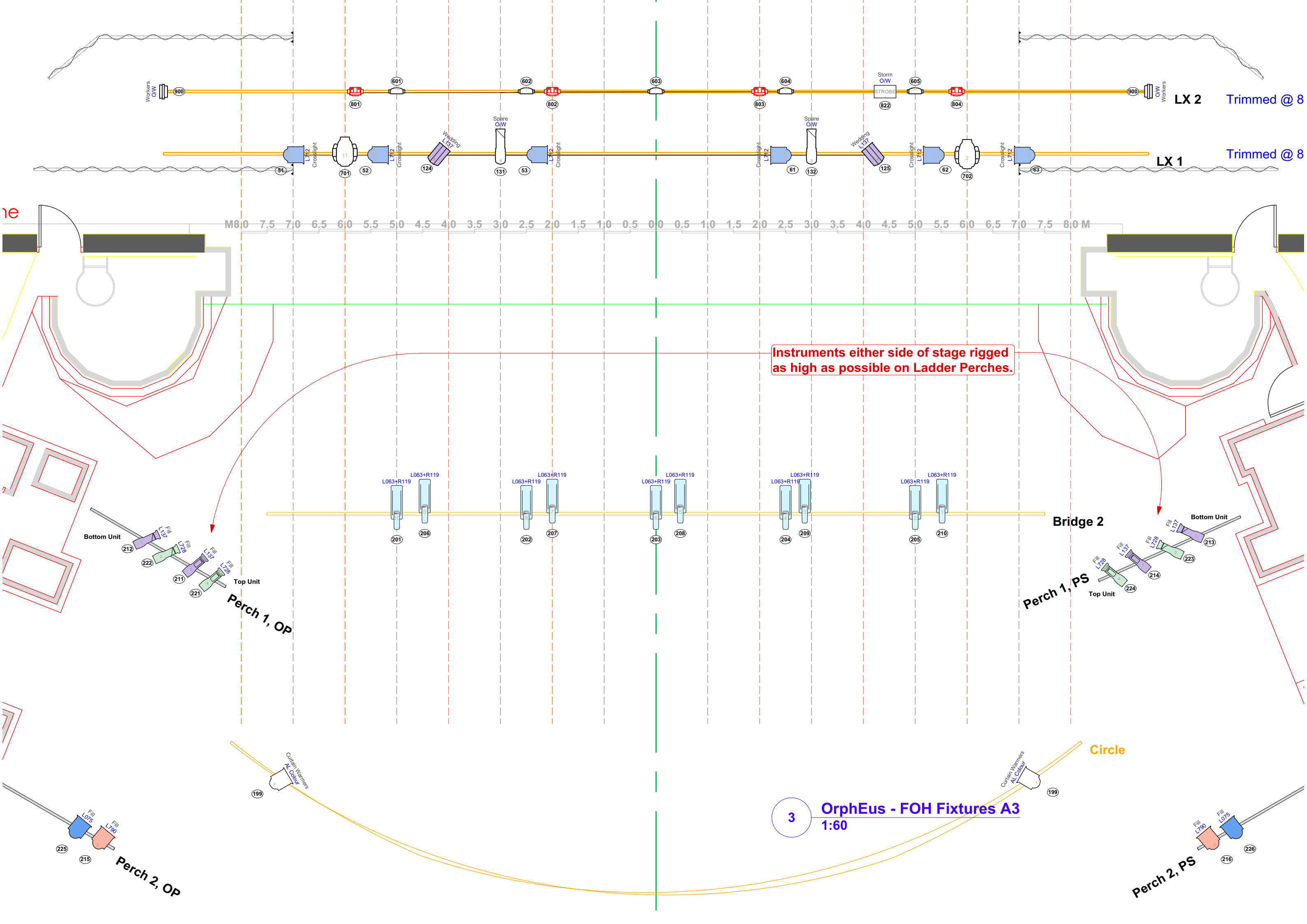
DRAWING DETAIL

Full LX Plan

Drawn By:	Nik Janiurek	Version:	3.5
Date:	26/02/2018	Page Size:	A1
		Scale:	1:50

All 2Ks on LX 7 to be rigged without barndoors





LX 2 Trimmed @ 8

LX 1 Trimmed @ 8

M8.0 7.5 7.0 6.5 6.0 5.5 5.0 4.5 4.0 3.5 3.0 2.5 2.0 1.5 1.0 0.5 0.0 0.5 1.0 1.5 2.0 2.5 3.0 3.5 4.0 4.5 5.0 5.5 6.0 6.5 7.0 7.5 8.0M

Instruments either side of stage rigged as high as possible on Ladder Perches.

Bridge 2

Bottom Unit
Top Unit
Perch 1, OP

Bottom Unit
Top Unit
Perch 1, PS

Circle

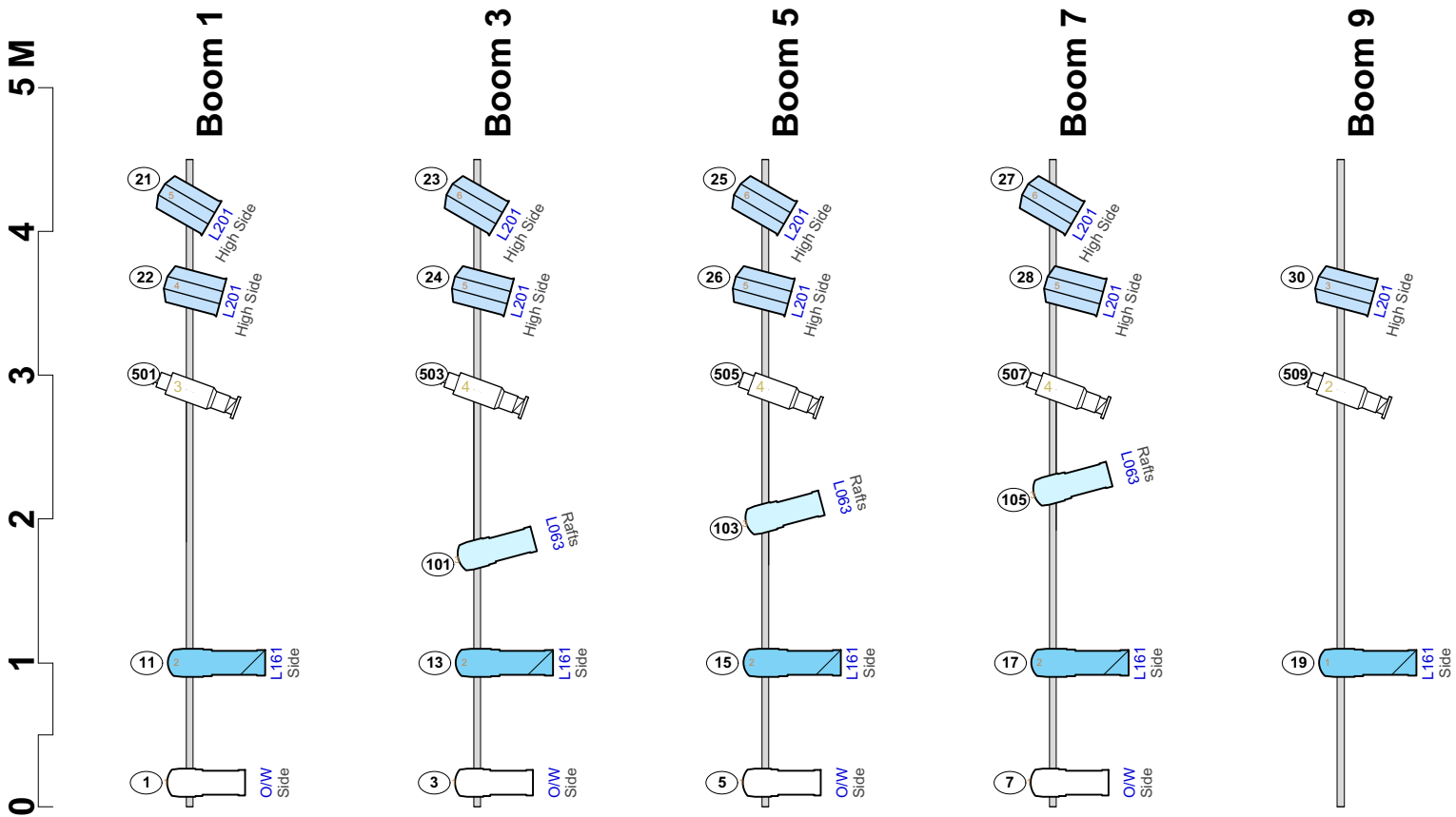
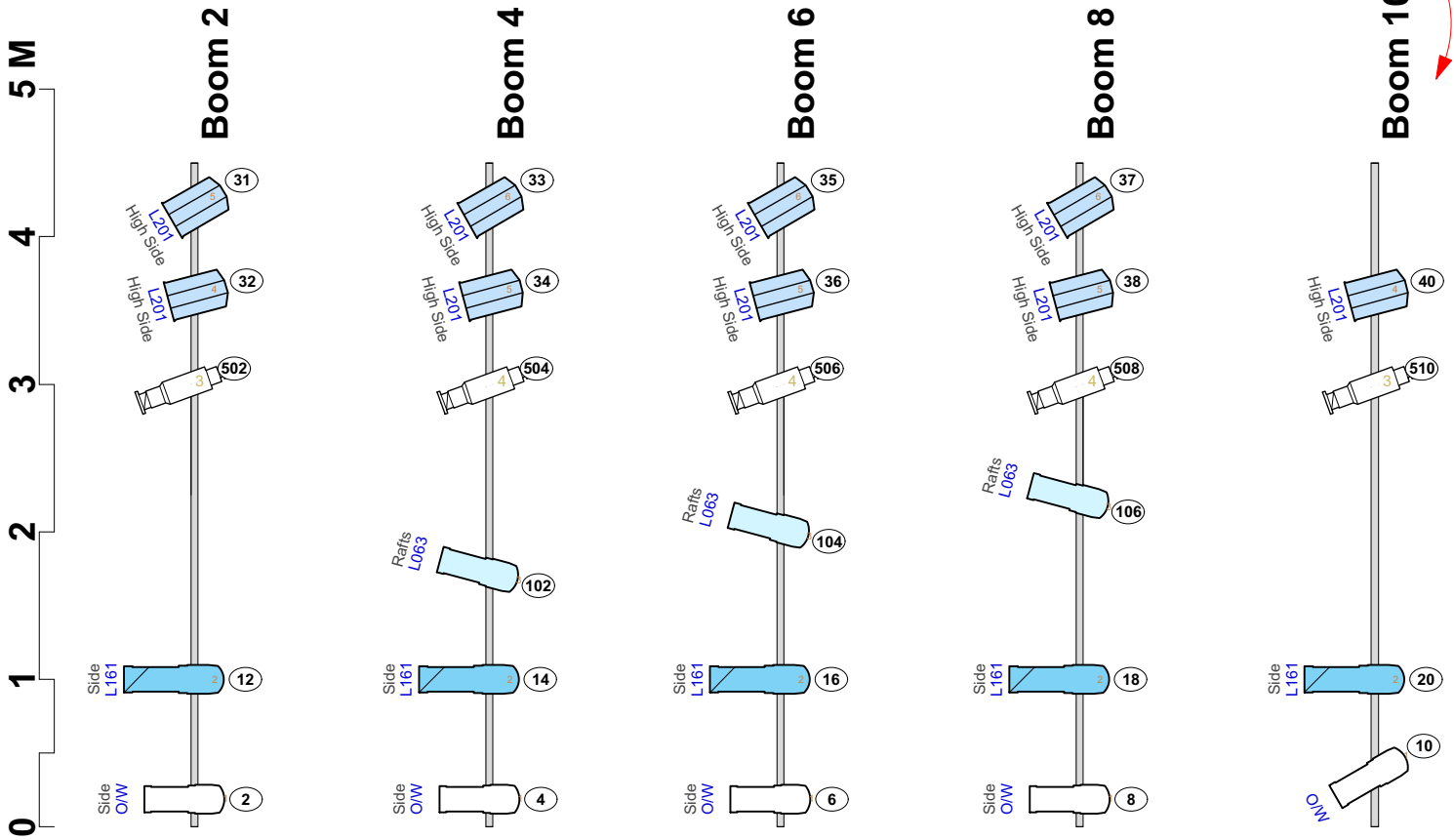
3 OrphEus - FOH Fixtures A3
1:60

Perch 2, OP

Perch 2, PS

PS BOOMS

Boom 10 rigged off a flown batten, 7.2m high approx.




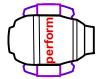
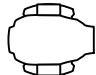
OP BOOMS

Symbol Key

Light

	2K Fresnel	32 / 32
	1200 PC	20 / 20
	80V Pacific 7.5-19°	10 / 10
	Pacific 12-28°	4 / 0
	Pacific 23-50°	12 / 12
	Altman Phoenix 26	10 / 10
	SPX 15-35°	20 / 20
	SPX 25-50°	20 / 20
	Par 64 CP61	11 / 11
	Showtec Club Par	15 / 15
	Martin Atomic 3000 DMX	2 / 2
	500w Flood	14 / 14
	Haze	2 / 0

Moving Light

	Martin Mac Aura	8 / 8
	Martin MAC Viper Performance	4 / 4
	Martin MAC Viper Profile	4 / 4

Color	Size	Count
AL Colour	245mm	2
L063	158mm	6
L063+R119	80V Pacific 7.5-19°	10
L075	245mm	2
L137	158mm	2
L137	185mm	4
L161	158mm	10
L201	185mm	18
L201	SPX 25-50°	5
L201	158mm	5
L206	245mm	10
L206	158mm	1
L712	245mm	12
L712	158mm	1
L719	245mm	4
L728	185mm	2
L728	158mm	11
L790	245mm	2

Typical

