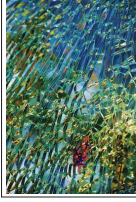
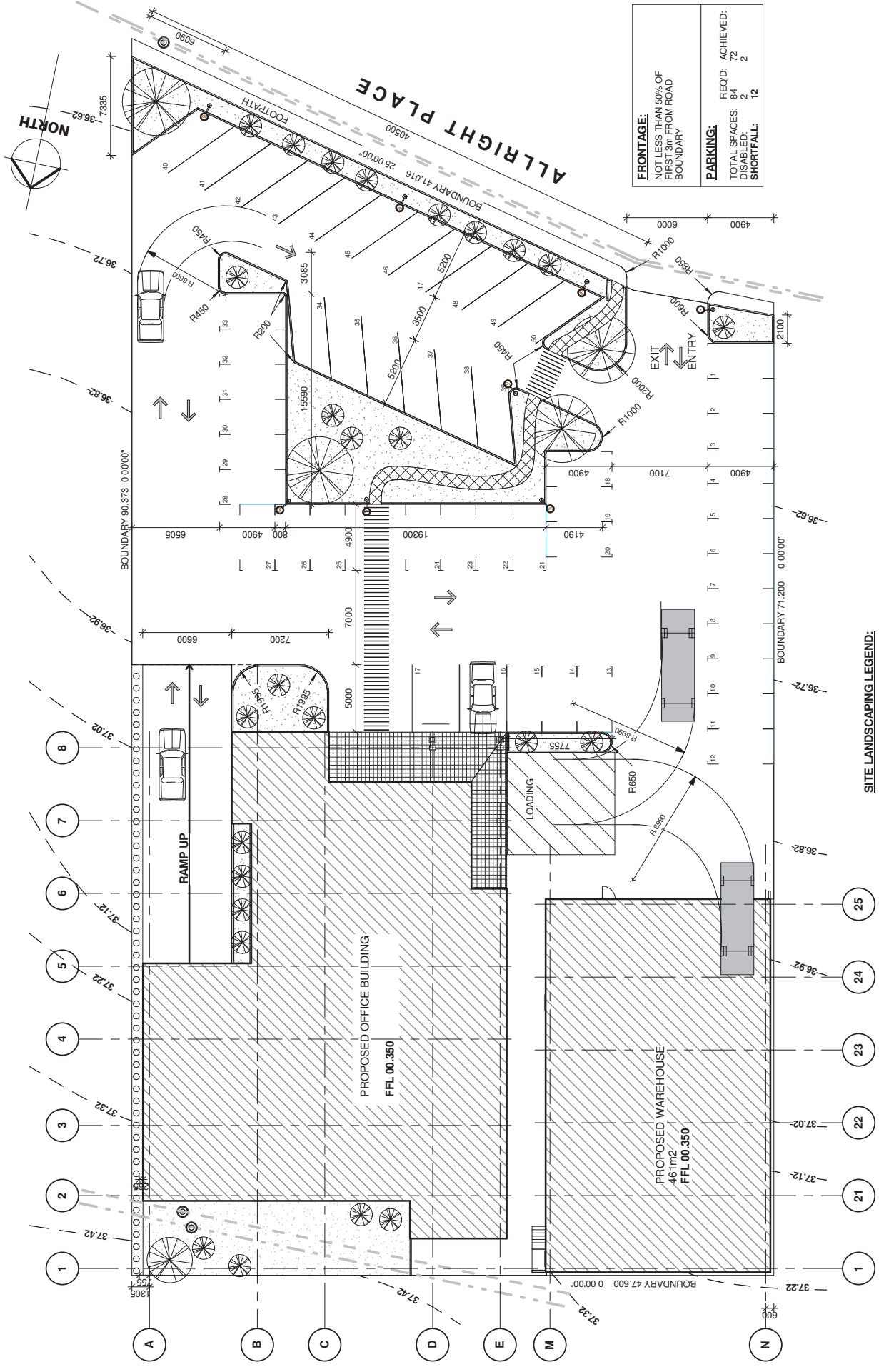


NOTES:
This copyright on this drawing is reserved.
Do not scale from this drawing.
It is issued to you in confidence and must not be
reproduced, copied, or disseminated in any
manner without our prior written permission.
This drawing is to be read in conjunction with all
relevant specifications, standards, codes of practice,
consultants, specialist manufacturers drawings and
other drawings.
Any discrepancies in dimensions or details on or
between these drawings should be drawn to our
advantage.
All dimensions are in millimetres unless noted
otherwise.

Avanah Campbell
ID: 1347902
Email: amc@campbelldesign.co.nz
COMPANIED BY: HIRSHMAN & WATSON ARCHITECTS



Drawn: Author
Checked: Author
Project name: B09
Scale A2:
DWG: A1.03
Date: NOV 2009
Project No: B09
Scale A3:
REV: 1
Status: 1,2,3,0



FRONTAGE:
NOT LESS THAN 50% OF
FIRST 5M FROM ROAD
BOUNDARY

PARKING:

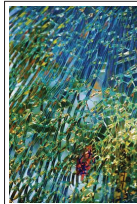
REQD:	ACHIEVED:
TOTAL SPACES: 84	72
DISABLED: 2	2
SHORTFALL: 12	

SITE LANDSCAPING LEGEND:

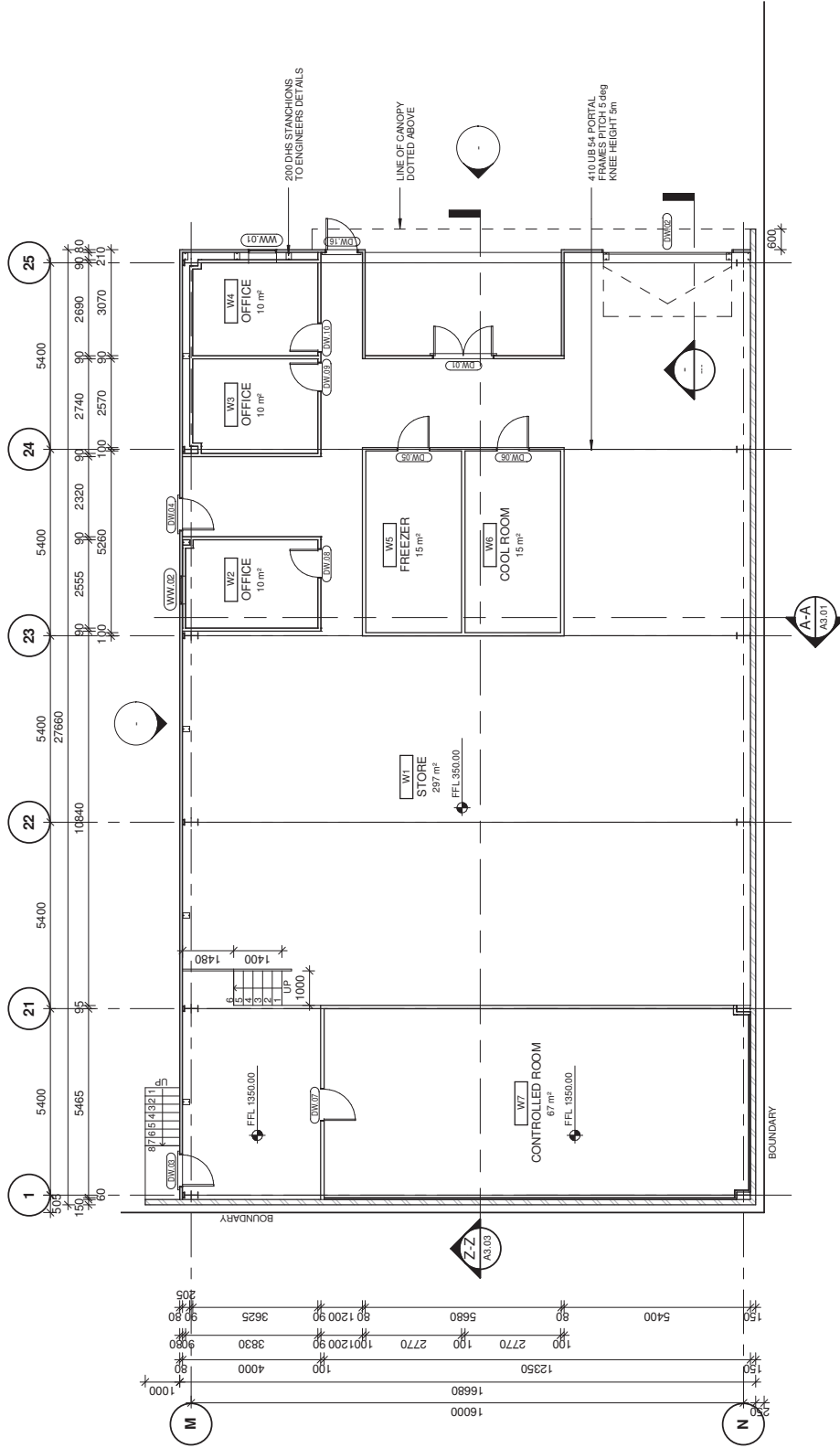
- EXTENT OF PROPOSED BUILDINGS: WAREHOUSE AND OFFICE TOWER
- 300x300 RE PORCELAIN TILES COLOUR/PATTERN TO BE SPECIFIED BY ARCHITECT
- 25mm ASPHALT PAVEMENT ON 100mm COMPACTED BASE COURSE ON 200mm COMPACTED SUBBASE
- 150x200 LANDSCAPE PAVING LAID HERRINGBONE PATTERN WITH 100x200 EDGING PAVING COLOUR TO BE SPECIFIED BY ARCHITECT
- GRASS
- NEW PLANTING
- LIGHTING PHILLIPS BORDEAUX LUMINAIRE ON 1558mm LONG CURVED BRACKET ON 4.5m ALUMINIUM METRO COLUMN

NOTES:

This copyright on this drawing is reserved.
Do not scale from this drawing.
It is issued to you in confidence and must not be
reproduced, copied, or otherwise used without our prior
permission.
This drawing is to be read in conjunction with all
consultants, specialist manufacturers drawings and
specifications.
Any discrepancies in dimensions or details on or
between these drawings should be drawn to our
drawings.
All dimensions are in millimetres unless noted
otherwise.

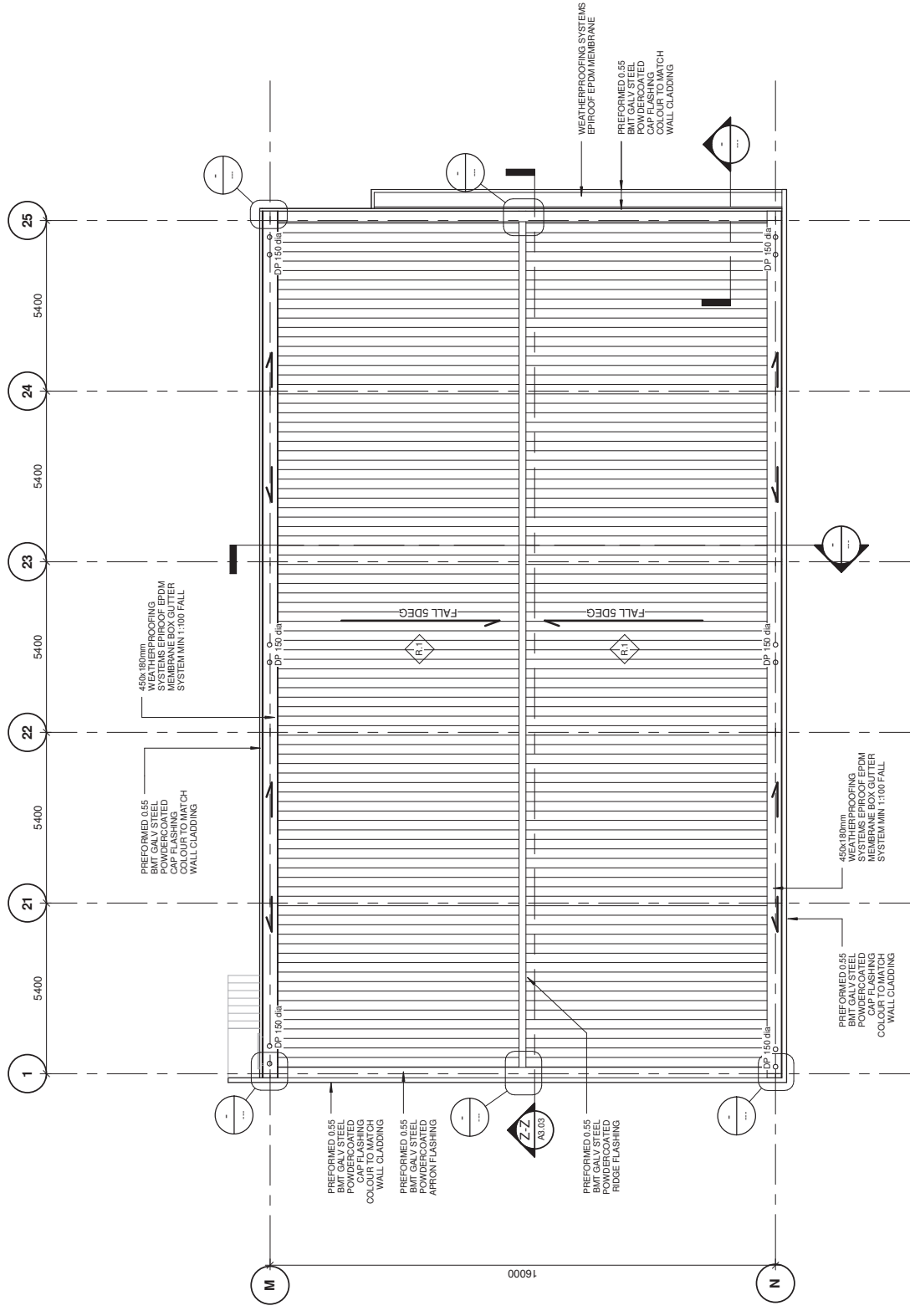


PAVING
FFL 200.00



- EXTERNAL WALLS**
- C.1 150 REINFORCED PRECAST PANEL TO ENGINEERS DETAILS TO EXTERIOR
- C.2 150 REINFORCED PRECAST PANEL TO ENGINEERS DETAILS SELECTED PLASTER FINISH OVER SEALER AND BASE COAT TO EXTERIOR
- C.3 ALUMINIUM COMPOSITE PANEL WALL COLOUR BLACK FLEETS PER MANUFACTURERS DETAILS TO 38x45 16.1 TIMBER BATTENS
- C.4 KINGSPAN KS900 EB SELECTED COLOUR TO BE FIXED TO MANUFACTURERS SPECIFICATIONS
- INTERNAL WALLS**
- P.1 90mm TIMBER FRAMING WITH 13mm GIBBOARD BOTH SIDES
- P.2 AAL SLIM LINE PARTITION WALL BY FORMAN GROUP 64mm ROUND FRAME 13mm GIBBOARD BOTH SIDES
- P.3 AAL GLAZED PARTITION WALL BY FORMAN GROUP LAMINATED GLAZING PANEL ETCHED
- S.1 400 x 600 CAST INSITU CONCRETE COLUMN, REINFORCED OVER SEALER AND BASE COAT

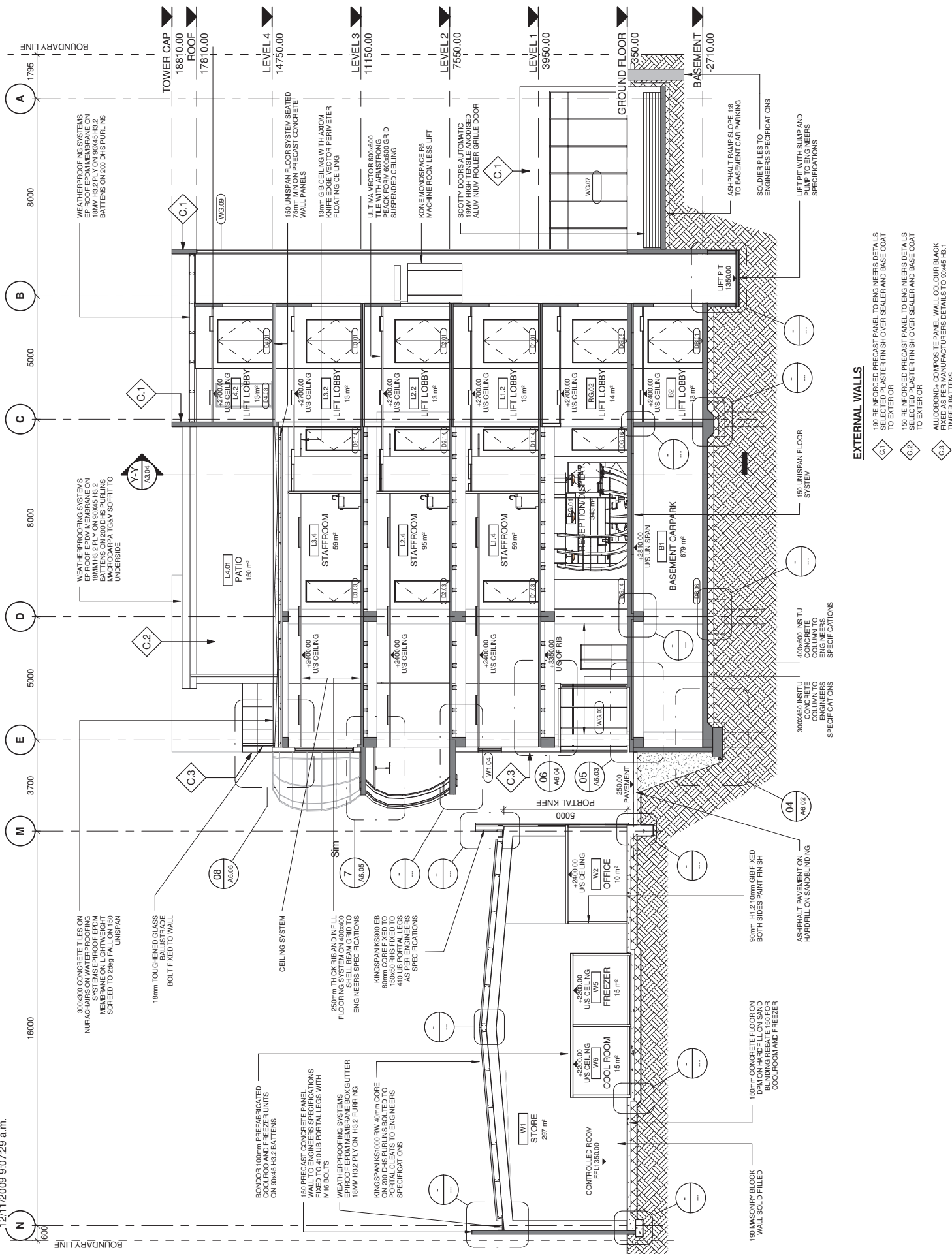
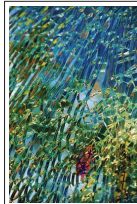
NOTES:
This copyright on this drawing is reserved.
Do not scale from this drawing.
It is issued to you in confidence and must not be
reproduced, copied, or disseminated without our prior
permission.
This drawing is to be read in conjunction with all
relevant
consultants, specialist manufacturers drawings and
specifications.
Any discrepancies in dimensions or details on or
between these drawings should be drawn to our
drawings.
All dimensions are in millimetres unless noted
otherwise.



ROOF LEGEND

- R-1 > BB900 ROOFING AT 3 DEG FALL
- R-2 > EPIROOF EPDM MEMBRANE ROOF AT FALLS AS NOTED ON DRAWING
- R-3 > EPIROOF EPDM MEMBRANE ROOF FALL AS NOTED 30mm CONCRETE TILES ON NURACHAIRS

NOTES:
This copyright on this drawing is reserved.
Do not scale from this drawing.
It is issued to you in confidence and must not be
reproduced, copied, disseminated, or
or disclosed to third parties without our prior
permission.
This drawing is to be used in conjunction with all
relevant
consultants, specialist manufacturers drawings and
specifications.
Any discrepancies in dimensions or details on or
between these drawings should be drawn to our
drawings.
All dimensions are in millimetres unless noted
otherwise.

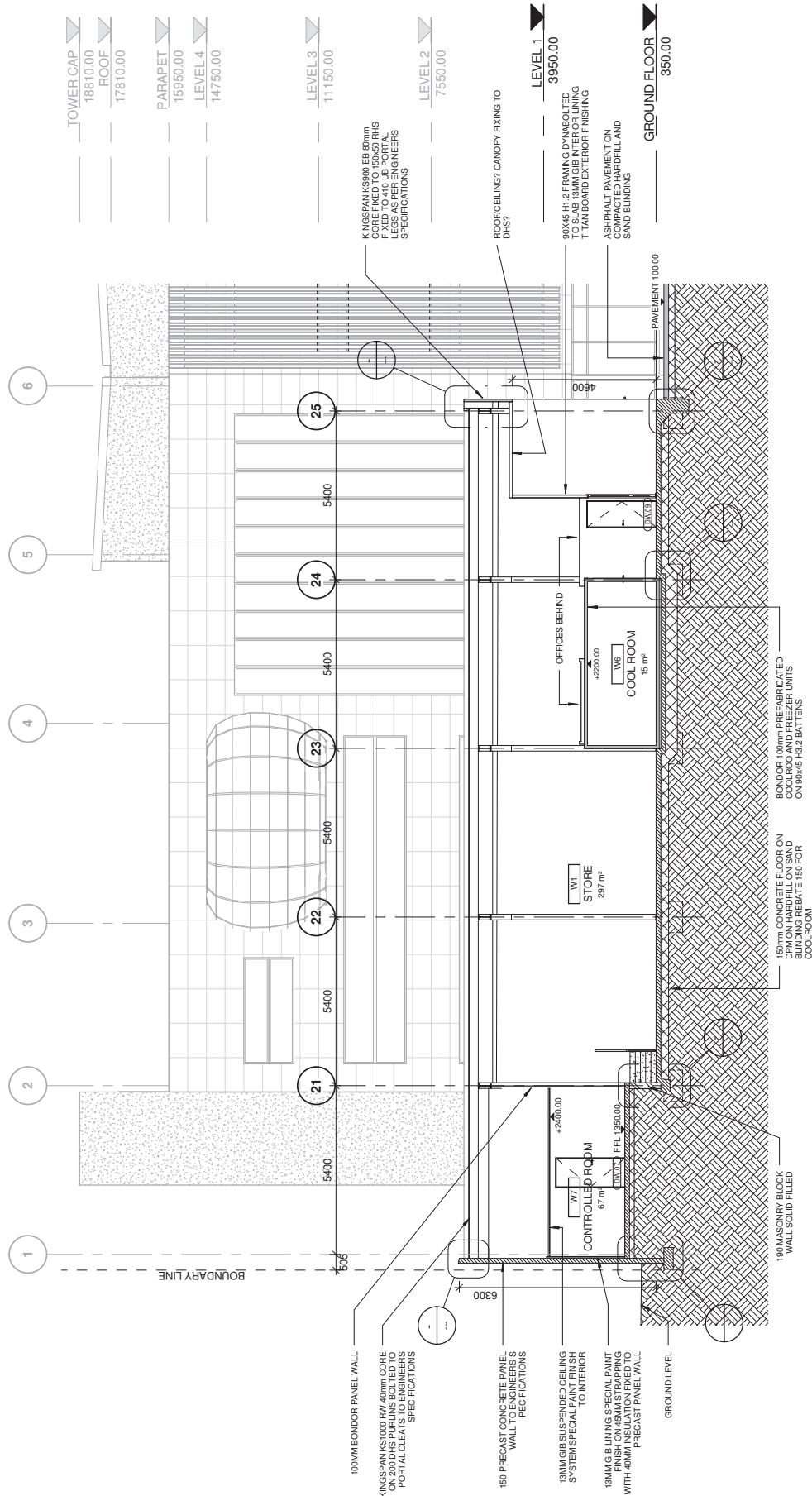
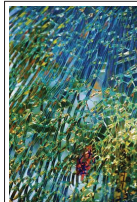


- EXTERNAL WALLS**
- C.1 150 REINFORCED PRECAST PANEL TO ENGINEERS DETAILS SELECTED PLASTER FINISH OVER SEALER AND BASE COAT TO EXTERIOR
 - C.2 150 REINFORCED PRECAST PANEL TO ENGINEERS DETAILS SELECTED PLASTER FINISH OVER SEALER AND BASE COAT TO EXTERIOR
 - C.3 ALUCOBOND - COMPOSITE PANEL WALL COLOUR BLACK FIXED AS PER MANUFACTURERS DETAILS TO 90x45 H3.1 TIMBER BATTENS

- A6.01 300x450 INSTITU COLUMN TO ENGINEERS SPECIFICATIONS
- A6.02 400x600 INSTITU COLUMN TO ENGINEERS SPECIFICATIONS
- A6.03 150 UNISPAN FLOOR SYSTEM
- A6.04 150 UNISPAN FLOOR SYSTEM
- A6.05 150 UNISPAN FLOOR SYSTEM
- A6.06 150 UNISPAN FLOOR SYSTEM
- A6.07 150 UNISPAN FLOOR SYSTEM
- A6.08 150 UNISPAN FLOOR SYSTEM
- A6.09 150 UNISPAN FLOOR SYSTEM
- A6.10 150 UNISPAN FLOOR SYSTEM
- A6.11 150 UNISPAN FLOOR SYSTEM
- A6.12 150 UNISPAN FLOOR SYSTEM
- A6.13 150 UNISPAN FLOOR SYSTEM
- A6.14 150 UNISPAN FLOOR SYSTEM
- A6.15 150 UNISPAN FLOOR SYSTEM
- A6.16 150 UNISPAN FLOOR SYSTEM
- A6.17 150 UNISPAN FLOOR SYSTEM
- A6.18 150 UNISPAN FLOOR SYSTEM
- A6.19 150 UNISPAN FLOOR SYSTEM
- A6.20 150 UNISPAN FLOOR SYSTEM
- A6.21 150 UNISPAN FLOOR SYSTEM
- A6.22 150 UNISPAN FLOOR SYSTEM
- A6.23 150 UNISPAN FLOOR SYSTEM
- A6.24 150 UNISPAN FLOOR SYSTEM
- A6.25 150 UNISPAN FLOOR SYSTEM
- A6.26 150 UNISPAN FLOOR SYSTEM
- A6.27 150 UNISPAN FLOOR SYSTEM
- A6.28 150 UNISPAN FLOOR SYSTEM
- A6.29 150 UNISPAN FLOOR SYSTEM
- A6.30 150 UNISPAN FLOOR SYSTEM
- A6.31 150 UNISPAN FLOOR SYSTEM
- A6.32 150 UNISPAN FLOOR SYSTEM
- A6.33 150 UNISPAN FLOOR SYSTEM
- A6.34 150 UNISPAN FLOOR SYSTEM
- A6.35 150 UNISPAN FLOOR SYSTEM
- A6.36 150 UNISPAN FLOOR SYSTEM
- A6.37 150 UNISPAN FLOOR SYSTEM
- A6.38 150 UNISPAN FLOOR SYSTEM
- A6.39 150 UNISPAN FLOOR SYSTEM
- A6.40 150 UNISPAN FLOOR SYSTEM
- A6.41 150 UNISPAN FLOOR SYSTEM
- A6.42 150 UNISPAN FLOOR SYSTEM
- A6.43 150 UNISPAN FLOOR SYSTEM
- A6.44 150 UNISPAN FLOOR SYSTEM
- A6.45 150 UNISPAN FLOOR SYSTEM
- A6.46 150 UNISPAN FLOOR SYSTEM
- A6.47 150 UNISPAN FLOOR SYSTEM
- A6.48 150 UNISPAN FLOOR SYSTEM
- A6.49 150 UNISPAN FLOOR SYSTEM
- A6.50 150 UNISPAN FLOOR SYSTEM
- A6.51 150 UNISPAN FLOOR SYSTEM
- A6.52 150 UNISPAN FLOOR SYSTEM
- A6.53 150 UNISPAN FLOOR SYSTEM
- A6.54 150 UNISPAN FLOOR SYSTEM
- A6.55 150 UNISPAN FLOOR SYSTEM
- A6.56 150 UNISPAN FLOOR SYSTEM
- A6.57 150 UNISPAN FLOOR SYSTEM
- A6.58 150 UNISPAN FLOOR SYSTEM
- A6.59 150 UNISPAN FLOOR SYSTEM
- A6.60 150 UNISPAN FLOOR SYSTEM
- A6.61 150 UNISPAN FLOOR SYSTEM
- A6.62 150 UNISPAN FLOOR SYSTEM
- A6.63 150 UNISPAN FLOOR SYSTEM
- A6.64 150 UNISPAN FLOOR SYSTEM
- A6.65 150 UNISPAN FLOOR SYSTEM
- A6.66 150 UNISPAN FLOOR SYSTEM
- A6.67 150 UNISPAN FLOOR SYSTEM
- A6.68 150 UNISPAN FLOOR SYSTEM
- A6.69 150 UNISPAN FLOOR SYSTEM
- A6.70 150 UNISPAN FLOOR SYSTEM
- A6.71 150 UNISPAN FLOOR SYSTEM
- A6.72 150 UNISPAN FLOOR SYSTEM
- A6.73 150 UNISPAN FLOOR SYSTEM
- A6.74 150 UNISPAN FLOOR SYSTEM
- A6.75 150 UNISPAN FLOOR SYSTEM
- A6.76 150 UNISPAN FLOOR SYSTEM
- A6.77 150 UNISPAN FLOOR SYSTEM
- A6.78 150 UNISPAN FLOOR SYSTEM
- A6.79 150 UNISPAN FLOOR SYSTEM
- A6.80 150 UNISPAN FLOOR SYSTEM
- A6.81 150 UNISPAN FLOOR SYSTEM
- A6.82 150 UNISPAN FLOOR SYSTEM
- A6.83 150 UNISPAN FLOOR SYSTEM
- A6.84 150 UNISPAN FLOOR SYSTEM
- A6.85 150 UNISPAN FLOOR SYSTEM
- A6.86 150 UNISPAN FLOOR SYSTEM
- A6.87 150 UNISPAN FLOOR SYSTEM
- A6.88 150 UNISPAN FLOOR SYSTEM
- A6.89 150 UNISPAN FLOOR SYSTEM
- A6.90 150 UNISPAN FLOOR SYSTEM
- A6.91 150 UNISPAN FLOOR SYSTEM
- A6.92 150 UNISPAN FLOOR SYSTEM
- A6.93 150 UNISPAN FLOOR SYSTEM
- A6.94 150 UNISPAN FLOOR SYSTEM
- A6.95 150 UNISPAN FLOOR SYSTEM
- A6.96 150 UNISPAN FLOOR SYSTEM
- A6.97 150 UNISPAN FLOOR SYSTEM
- A6.98 150 UNISPAN FLOOR SYSTEM
- A6.99 150 UNISPAN FLOOR SYSTEM
- A6.100 150 UNISPAN FLOOR SYSTEM

NOTES:

This copyright on this drawing is reserved.
Do not scale from this drawing.
It is issued to you in confidence and must not be
reproduced, copied, or passed to third parties without our prior
permission.
Nothing is to be read in conjunction with all
relevant
consultants, specialist manufacturers drawings and
specifications.
Any discrepancies in dimensions or details on or
between these drawings should be drawn to our
drawings.
All dimensions are in millimetres unless noted
otherwise.



NOTES:

This copyright on this drawing is reserved.
Do not scale from this drawing.
It is issued to you in confidence and must not be
reproduced, copied, disseminated, or otherwise
or disclosed to third parties without our prior
permission.
This drawing is to be read in conjunction with all
relevant
consultants, specialist manufacturers drawings and
specifications.
Any discrepancies in dimensions or details on or
between these drawings should be drawn to our
drawing.
All dimensions are in millimetres unless noted
otherwise.

